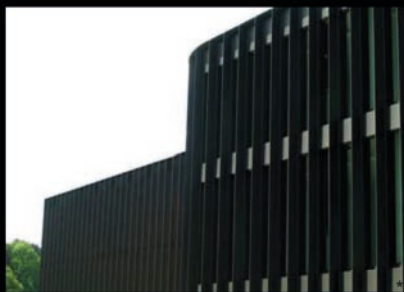


PLAGARO COWEE
ARCHITEKTUR

HERRLIBERG ZH
SWITZERLAND



ARCHITECTURE
URBAN PLANNING
REFURBISHMENT
CONSTRUCTION
MANAGEMENT

**1ST PRIZE**

BRIDGES, TUNNEL & CONNECTION WITH SBB STATION
OLTEN, SWITZERLAND. 2012
1.000M²; 20M CHF
PROJECT DIRECTOR, CONCEPTION

**1ST PRIZE**

GP COLOR FACTORY VISITOR'S CENTER
KIRCHBERG, SWITZERLAND. 2010
1.500M²; 8M CHF
PROJECT DIRECTOR, CONCEPTION*, CONSTRUCTED



1ST PRIZE, DISTINCTION ROMANDE D'ARCHIT., MENTION.
WORLD RESEARCH CAMPUS PHILIP MORRIS
NEUCHÂTEL, SWITZERLAND. 2009
38.000M²; 110M CHF
PROJECT DIRECTOR, CONCEPTION, CONSTRUCTION*

**1ST PRIZE**

LIFE SCIENCE PLATFORM ETHZ
ZÜRICH, SWITZERLAND. 2011
16.000M²; 150M CHF
PROJECT DIRECTOR, CONCEPTION*, CONSTRUCTED

**1ST PRIZE**

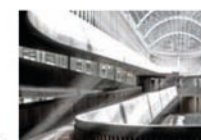
WUKESONG OLYMPIC SPORT & CULTURAL CENTRE
BEIJING OLYMPICS 2008, CHINA. 2008
150.000M²; 150M CHF
PROJECT DIRECTOR, CONCEPTION*; CONSTR. BY 3RDS

**1ST PRIZE**

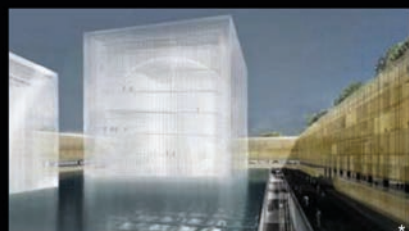
THE TERESITAS SEA-FRONT AND MASTER PLAN
SANTA CRUZ DE TENERIFE, SPAIN. 2001
18HA
PROJECT DIRECTOR*

**2ND PRIZE**

BOSCHUNG AG HEADQUARTERS
MILITARY AIRPORT PAYERNE, SWITZERLAND. 2013
35M CHF
PROJECT DIRECTOR, CONCEPTION.



*WITH BURCKHARDTPARTNER, ZH; ^WITH D.PERRAULT, PARIS; ^WITH LOT-Z

**2ND PRIZE**

AVIA ZH HEADQUARTERS AND PETROL STATION
 OERLIKON, SWITZERLAND. 2010
 4'000M²

PROJECT DIRECTOR, CONCEPTION ^

**2ND PRIZE**

BUILDING "G" EUROPAALLE
 ZURICH, SWITZERLAND. 2009
 30.000M²

PROJECT DIRECTOR, CONCEPTION*

**2ND PRIZE**

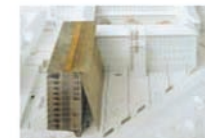
UNIVERSITY IRCHEL EXTENSION
 ZURICH, SWITZERLAND. 2007
 30.000M²

PROJECT DIRECTOR, CONCEPTION*

**2ND PRIZE**

REINA SOFÍA MUSEUM MODERN ART EXTENSION
 MADRID, SPAIN. 1999
 20.000M²

CO-PROJECT DIRECTOR^o

**2ND PRIZE**

4* HOTEL LEUTSCHENBACH
 ZURICH, SWITZERLAND. 2008
 10.000M²

PROJECT DIRECTOR, CONCEPTION*

**2ND PRIZE**

TRIEMLI HOSPITAL
 ZÜRICH, SWITZERLAND. 2005
 20.000M²

PROJECT TEAM*

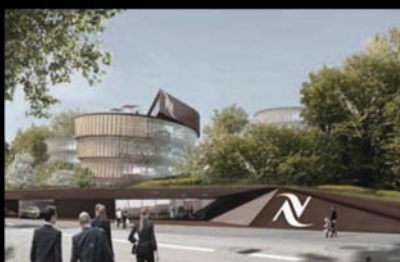
**DIRECT COMMISSION**

UNIT MEET2CREATE, NEST EMPA
 DÜBENDORF, SWITZERLAND. 2014
 250M²

ARCHITECTURE, WITH CCTP-HSLU



*WITH BURCKHARDTPARTNER, ZH; ^oWITH D.PERRAULT, PARIS; ^ WITH LOT-Z



DIRECT COMMISSION
LISTED HOUSE REFURBISHMENT
HERRLIBERG, SWITZERLAND. 2010
110M²
CONCEPTION AND PROJECT DIRECTOR. CONSTRUCTED



DIRECT COMMISSION
SKYSCRAPER HOTEL AND CONFERENCE CENTER
DIAGONAL AV., BARCELONA, SPAIN. 2001
28.000M²
PROJECT DIRECTOR[°], CONSTRUCTED



AMONGST 4 FINALISTS
COPTIC RELIGIOUS CAMPUS AND CATHEDRAL
TORONTO, CANADA. 2003
80.000M²
PROJECT DIRECTOR, CONCEPTION*



AMONGST 6 FINALIST (FROM 2'000 PARTICIPANTS)
OLYMPIC LANDMARK PARIS OLYMPICS 2012
PARIS, FRANCE. 2004
3.600M²
PROJECT DIRECTOR, CONCEPTION



AMONGST 10 FINALISTS
EUROPEAN PATENT OFFICE
DEN HAAG, NETHERLANDS. 2004
60.000M²
PROJECT DIRECTOR, CONCEPTION*



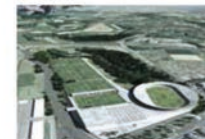
SELECTED FOR PUBLISHING
GREAT EGYPTIAN MUSEUM
EL CAIRO, EGYPT. 2004
20.000M²
PROJECT DIRECTOR, CONCEPTION*



*WITH BURCKHARDTPARTNER, ZH; °WITH D.PERRAULT, PARIS; ^ WITH LOT-Z



MASTERPLAN & FOOTBALL HEADQUARTERS
LAUSANNE, SWITZERLAND. 2011
30HA, 2.000M²
CONCEPTION AND CO-PROJECT DIRECTOR, WITH H.S.



STADTARCHIV LUZERN
LUCERNE, SWITZERLAND. 2011
2.000M²
PROJECT DIRECTOR, CONCEPTION ^



NORDHAVNEN MASTERPLAN
COPENHAGEN, DENMARK. 2008
4.500.000 M²
PROJECT DIRECTOR, CO-CONCEPTION*



NESPRESSO HEADQUARTERS
LAUSANNE, SWITZERLAND. 2007
10.000M²
PROJECT DIRECTOR, CONCEPTION*



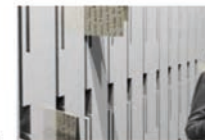
ASPLUND NATIONAL LIBRARY EXTENSION
STOCKHOLM, SWEDEN. 2007
7.000M²
PROJECT DIRECTOR, CONCEPTION*



R&D DEPARTMENT ETHZ, SWISS INST. OF TECH.
ZÜRICH, SWITZERLAND. 2007
13.000M²
PROJECT DIRECTOR, CONCEPTION*



MONUMENT FREEDOM OF EXPRESSION
MADRID, SPAIN. 2006
20M²
COOPERATION WITH HUGO SORIANO



*WITH BURCKHARDTPARTNER, ZH; ^WITH D.PERRAULT, PARIS; ^WITH LOT-Z



NATIONAL PERFORMING ARTS CENTER
KAOHSIUNG, TAIWAN. 2006
60.000M²
PROJECT DIRECTOR, CONCEPTION*

POLICE AND COURT CITY
ZÜRICH, SWITZERLAND. 2006
106.000M²
CO-DIRECTOR, CONCEPTION*

SYNTHE'S HEADQUARTERS
SOLOTHURN, SWITZERLAND. 2006
14.000M²
PROJECT DIRECTOR, CONCEPTION*

COURT OF JUSTICE
MUTTENZ, SWITZERLAND. 2005
6.000M²
PROJECT DIRECTOR, CONCEPTION*

CIVIC CULTURAL CENTER
SANTA CRUZ DE TENERIFE, SPAIN. 2005
2.000M²
PROJECT DIRECTOR, CONCEPTION

MAAG TOWER
ZÜRICH, SWITZERLAND. 2004
45.000M²
PROJECT DIRECTOR, CONCEPTION*

LABORATORIES BERN UNIVERSITY
BERN, SWITZERLAND. 2004
10.000M²
PROJECT DIRECTOR, CONCEPTION*

*WITH BURCKHARDTPARTNER, ZH; ^WITH D.PERRAULT, PARIS; ^WITH LOT-Z





U2 LANDMARK TOWER
DUBLIN, IRELAND. 2003
2.800M²
PROJECT DIRECTOR, CONCEPTION*

BRIDGE OVER THE LIFFEY RIVER
DUBLIN, IRELAND. 2003
600M²
PROJECT DIRECTOR, CONCEPTION

MASTERPLAN & DWELLINGS
RISCH, SWITZERLAND. 2002
1.200M²
PROJECT DIRECTOR, CONCEPTION*

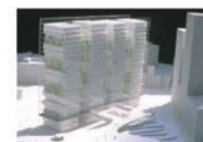
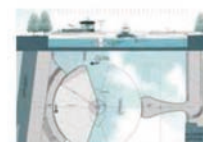
SKYCRAPER OFFICE AND HESPERIA HOTEL
DIAGONAL AV., BARCELONA, SPAIN. 2001
33.000M²
PROJECT COORDINATOR°

PINAULT FOUNDATION FOR MODERN ART
PARIS, FRANCE. 2001
33.000M²
PROJECT TEAM°

AMAG-BVK OFFICES
ZURICH, SWITZERLAND. 2001
35.000M²
PROJECT TEAM°

CANFRANC PLATFORM MASTER PLAN
PYRENEES, SPAIN. 2001
17 HA
PROJECT DIRECTOR°

*WITH BURCKHARDTPARTNER, ZH; °WITH D.PERRAULT, PARIS; ^ WITH LOT-Z



INFOBOX
TENERIFE, SPAIN. 2000
250M²
PROJECT DIRECTOR, CONSTRUCTED[°]

EXTENSION TO ZÜRICH LANDESMUSEUM
ZÜRICH, SWITZERLAND. 2000
10.000M²
PROJECT DIRECTOR[°]

DANISH RADIO HEADQUARTERS
COPENHAGEN (DENMARK). 2000
16.000M²
PROJECT TEAM[°]

CITY OF GALICIAN CULTURE
SANTIAGO DE COMPOSTELA, SPAIN. 1999
60.000M²
PROJECT TEAM[°]



CITY ARCHIVE, LUGERNE, SWITZERLAND [^]

[°]WITH BURCKHARDTPARTNER, ZH; [°]WITH D. PERRAULT, PARIS; [^]WITH LOT-Z



FOOTBALL STADIUM, LAUSANNE, SWITZERLAND



FOOTBALL STADIUM, LAUSANNE.



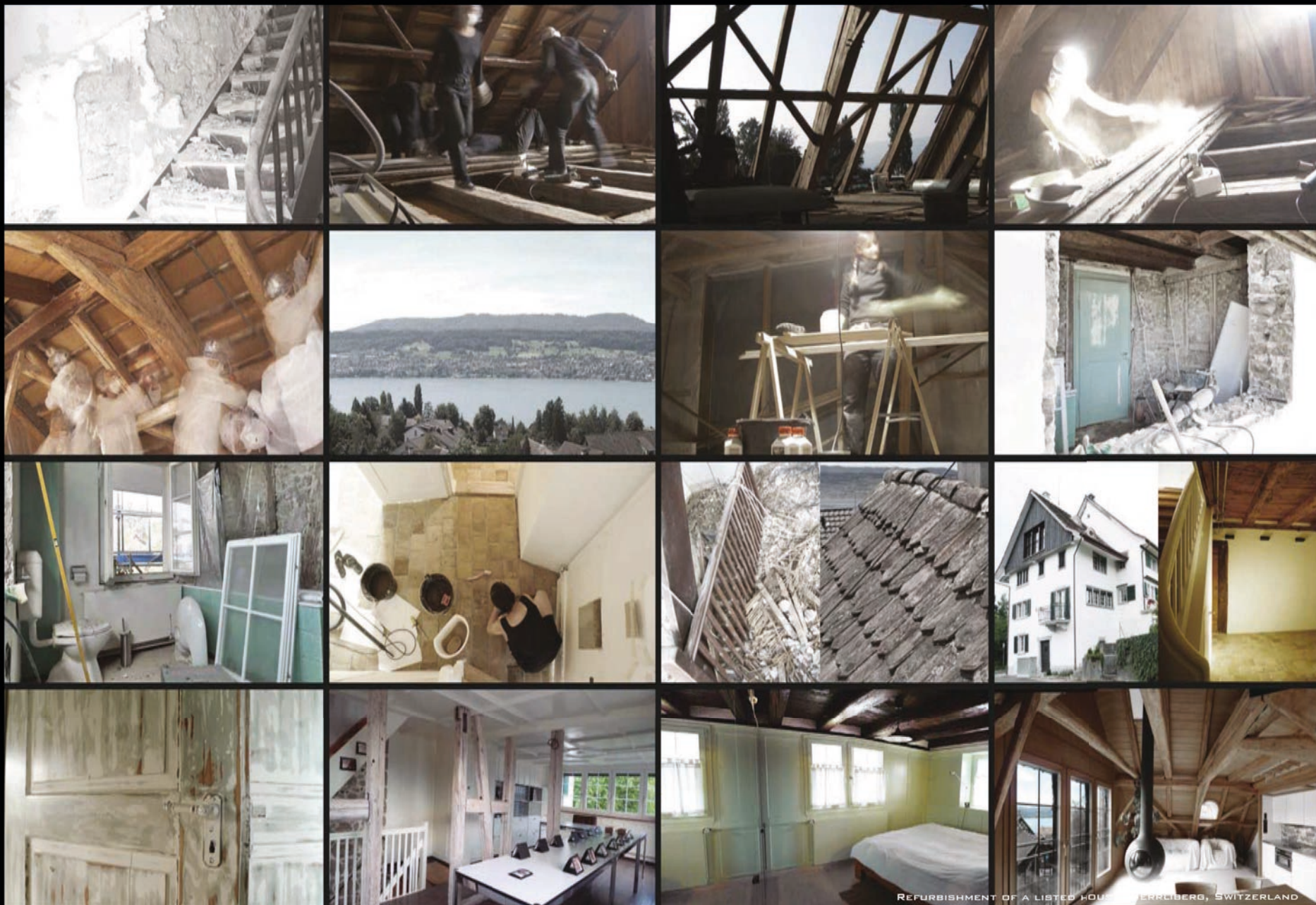
PEDESTRIAN BRIDGES & TUNNEL CONNECTION TO SBB RAILWAY STATION, OLTEN, SWITZERLAND



PEDESTRIAN BRIDGES & TUNNEL CONNECTION TO SBB RAILWAY STATION, OLTEN, SWITZERLAND



REFURBISHMENT OF A LISTED HOUSE, HERRLIBERG, SWITZERLAND



REFURBISHMENT OF A LISTED HOUSE TERRBERG, SWITZERLAND



MASTERPLAN AND FOOTBALL STADIUM, LAUSANNE, SWITZERLAND



COLOUR FACTORY 16P, FOR ROBERTO PARTNER AG



BOSCHUNG AG HEADQUARTERS, PAYERNE MILITARY AIRPORT, SWITZERLAND



BOSCHUNG AG HEADQUARTERS, PAYERNE MILITARY AIRPORT, SWITZERLAND

NATALIE PLAGARO COWEE
PLAGARO COWEE / ARCHITEKTUR

ARCHITECT ETSAM SIA, SPECIALITY STRUCTURE.

NATIONALITY
 SWISS & BRITISH & SPANISH

RESIDENCE
 2003- ZÜRICH, SWITZERLAND.
 2002 BEIJING, CHINA.
 2001 ZÜRICH, SWITZERLAND.
 1997 PARIS, FRANCE.
 1992 MADRID, SPAIN.
 1992 OXFORD, GREAT BRITAIN.
 1989 GRAN CANARIA, SPAIN.
 1983 TENERIFE, SPAIN.
 1981 GERONA, SPAIN.
 1971 MALAGA, SPAIN.

LANGUAGES
 GERMAN, ENGLISH, SPANISH, FRENCH

ACADEMIC ACTIVITY

2013 LECTURER/FACULTY ARCHITECTURE&TECTONICS, ALPINE HUB, SWITZERLAND & CORE MODULE ALPINE SURVIVAL, AT SCHOOL OF ARCHITECTURE HOCHSCHULE LUZERN TECHNIK & ARCHITEKTUR, SWITZERLAND.

2012 LECTURER AT OPEN ARCHITECTURE CONGRESS, CIB, BEIJING, CHINA.

2012 LECTURER/FACULTY ARCHITECTURE&TECTONICS, BRIDGE AS DESTINATION, PARIS FRANCE AT SCHOOL OF ARCHITECTURE HOCHSCHULE LUZERN TECHNIK & ARCHITEKTUR, SWITZERLAND.

2011 LECTURER AT OPEN ARCHITECTURE CONGRESS, CIB, BOSTON, USA.

2011 LECTURER/FACULTY ARCHITECTURE&TECTONICS, HOUSING FOR ROWERS, LONDON UK AT SCHOOL OF ARCHITECTURE HOCHSCHULE LUZERN TECHNIK & ARCHITEKTUR, SWITZERLAND.

2011 LECTURER/FACULTY IN-DEPTH STUDY STRUCTURE, AT SCHOOL OF ARCHITECTURE HOCHSCHULE LUZERN TECHNIK & ARCHITEKTUR, SWITZERLAND.

2010 LECTURER/FACULTY ARCHITECTURE&TECTONICS, PERFORMING ART CENTER CHANDIGARH INDIA AT SCHOOL OF ARCHITECTURE HOCHSCHULE LUZERN TECHNIK & ARCHITEKTUR, SWITZERLAND.

SINCE 2010 TEACHER FOR ARCHITECTURE & CONSTRUCTION AT SCHOOL OF ARCHITECTURE HOCHSCHULE LUZERN TECH.& ARCHITEKTUR, CH.

2009 LECTURER AT STATUS SEMINAR ENERGY AND ENVIRONMENTAL RESEARCH ETH ZÜRICH, "SHELTERED ROOMS", CH.

2009 LECTURER AT CHANGING ROLES / SUSTAINABLE FUTURE INTERNATIONAL CONGRESS, CIB 104, ROTTERDAM, NE.

2008 LECTURER (VORTAGSREIHE) AT SCHOOL OF ARCHITECTURE NÜRNBERG, DE.

2008 LECTURER AT STATUS SEMINAR ENERGY AND ENVIRONMENTAL RESEARCH ETH ZÜRICH, "TYPOLOGIE DER FLEXIBILITÄT IM HOCHBAU", CH.

2007 LECTURER (VORTAGSREIHE) AT SCHOOL OF ARCHITECTURE COBURG, DE.

SINCE 2006 RESEARCHER AT THE RESEARCH DEPARTMENT, HOCHSCHULE FÜR TECHNIK, INFORMATIK UND ARCHITEKTUR LUZERN, CH.

2006 LECTURER (VORTAGSREIHE) AT THE UNIVERSITY OF APPLIED SCIENCES N/W NORTHWESTERN, "INSIGHT CHINA 2006", CH.

2005 ASSIGNED VISITING INSTRUCTOR BY THE DRURY UNIVERSITY, SPRINGFIELD USA. STAND-BY.

SINCE 2004 STUDENT OF PHILOSOPHY AT ZÜRICH UNIVERSITY, CH.

2003-4 LISTENER AT FACULTY OF PHILOSOPHY (ANALYTIC PHILOSOPHY + QUINE+PLATON), ZÜRICH UNIVERSITY, CH.

2003 INVITED GUEST FOR MIDTERM CRITICS J.L.MATEO CHAIR, ETHZ (SWISS FEDERAL INSTITUTE OF TECHNOLOGY ZÜRICH, DEPARTMENT OF ARCHITECTURE)

2001 ASSISTANT PROFESSOR "MADRID OLYMPIC GAMES", MINISTER OF PUBLIC WORKS, MADRID (ES), WITH WIEL ARETS, SEJIMA, WINNY MAAS (MRDV), C.FERRATER, MANSILLA Y TUÑON, L.A. COUTURE (ASYMPTOTE), NIETO & SOBEJANO, E.ARROYO, ES.

1998 LANDSCAPE STUDIES AT THE CONSERVATOIRE INTERNATIONAL DES PARCS ET DU PAYSAGE CHAUMONT SUR LOIRE, FR.

1997 ARCHITECTURE (6+1 YEAR STUDIES.) POLYTECHNIC UNIVERSITY OF MADRID, ES. QUALIFICATION: 9/10. BRANCH: STRUCTURES

1993 SUMMER COURSE "TO CONSTRUCT ON WHAT IS CONSTRUCTED". RAFAEL MONEO (EL ESCORIAL, ES.

1992 ERASMUS EUROPEAN UNIVERSITY EXCHANGE PROGRAM PLANNING / ARCHITECTURE STUDIES AT THE OXFORD POLYTECHNIC UNIVERSITY, UK.

1989 PRE UNIVERSITY STUDIES C.O.U.(TENERIFE, SPAIN)
 QUALIFICATION: SPECIAL HONOURS OF THE JURY (10/10)

PLAGARO COWEE
ARCHITEKTUR

HERRLIBERG ZH
SWITZERLAND



ARCHITECTURE
URBAN PLANNING
REFURBISHMENT
CONSTRUCTION
MANAGEMENT

PLAGARO COWEE / ARCHITEKTUR

PFARRGASSE 10, CH-8704 HERRLIBERG

ZÜRICH, SWITZERLAND

TEL. +41 (0) 44 536 12 82

TEL. +41 (0) 76 345 77 33

INFO@PLAGAROCOWEE.COM

WWW.PLAGAROCOWEE.COM